

UNIFY GO

Easily transition from compliance-based security awareness, training & phishing to outcome-based human risk management.

Introducing Unify Go, an easy and powerful entry point to human risk management. With Unify Go, security teams can rapidly surface granular security vulnerabilities across the workforce by aggregating and correlating employee behavior across security training, phishing, and email security tools.

Unify Go builds upon and extends beyond security awareness, training and phishing. Rather than focusing on compliance-based outcomes such as click and completion rates, Unify Go enables security teams to surface combinations of behaviors that identify both the type and degree of security vulnerabilities across a workforce.

Start Here for Human Risk Management

Unify Go combines with Living Security's industry-leading Training to provide all the capabilities needed to implement a Human Risk Management solution focused on reducing social engineering. Unify Go works with the most popular identity, training, phishing, and email security tools with integrations to dozens of tools, including Proofpoint, KnowBe4, Cofense, Microsoft, Mimecast, Abnormal Security, and more.

Go Beyond Compliance-Based Outcomes

Altering behavior and empowering team members to be the most effective defense against cyber threats requires a data-centric-analysis-driven approach.

Uplevel the security conversation by putting human risk exposure in the business terms your organization will understand.

With Unify's scorecards, see and share exactly which parts of the business and behaviors are driving risk, and partner with the precise teams and departments to change security behavior and create change.



“In the past, we would look at things like, did people do the online training? As I learned more, I realized that that’s not really enough, it’s really the behavior change that I want. With Unify, I can correlate all our data, and in doing so, I learn things that I hadn’t known before.”



Brian Markham
CISO at
EAB Global



Key Features

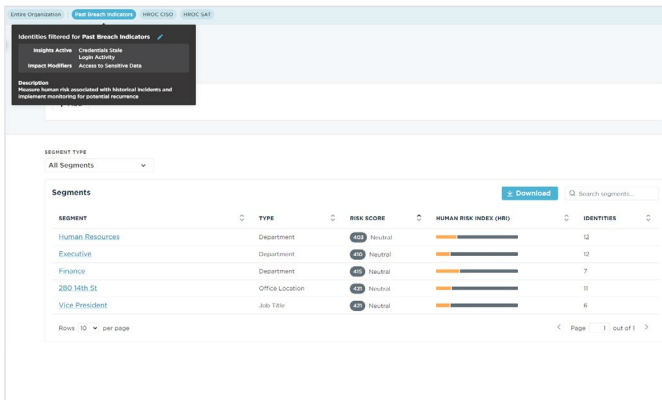
Unify Go makes it easy for security teams to implement risk-based management in their organizations by combining the following features:

1. Intelligence Engine

Insight Detections			
INSIGHT NAME	DETECTIONS	FIRST DETECTION DATE	MOST RECENT DETECTION DATE
Phish Targeted	30	3/26/2023	4/24/2023
Phish Opened	20	4/5/2023	4/24/2023
Phish Clicked Multiple Times	20	4/5/2023	4/24/2023
Phish Clicked	20	4/5/2023	4/24/2023
Malware Detected	30	3/26/2023	4/24/2023
Simulated Phish Opened	29	3/27/2023	4/24/2023
Credentials Reset Recently	11	4/14/2023	4/24/2023
Login Failure - Invalid Credentials	30	3/26/2023	4/24/2023
Login Activity	60	3/26/2023	4/24/2023
Phishing Risk	90	3/26/2023	4/24/2023

This engine ingests, aggregates, and correlates event, device, and identity data across existing identity management, security training, phishing, and email security tools to build a dynamic risk profile of every member of the workforce.

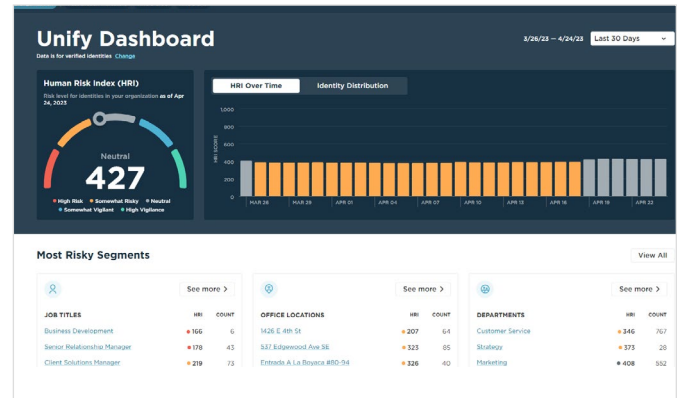
2. Human Risk Operations Center (HROC)



SEGMENT	TYPE	RISK SCORE	HUMAN RISK INDEX (HRI)	IDENTITIES
Human Resources	Department	45	Neutral	12
Executive	Department	45	Neutral	12
Finance	Department	45	Neutral	7
280 34th St	Office Location	45	Neutral	8
Vice President	Job Title	45	Neutral	8

The HROC unites the Security Operations Center (SOC), Security Awareness and Training (SAT), and Governance, Risk, and Compliance (GRC) teams by providing them with granular dashboards and lenses into human risk and insider threats.

3. Human Risk Index (HRI)



This proprietary, patent-pending algorithm sorts individuals and groups into five distinct levels of risk. The model considers criteria spanning hundreds of behavioral data points across your existing IT and security tools.

4. Action Plans



Security teams can generate tailored, risk-based action plans focused on specific behaviors across location, department, or segments. Examples include enrolling team members into a security training course and/or additional phishing simulations.